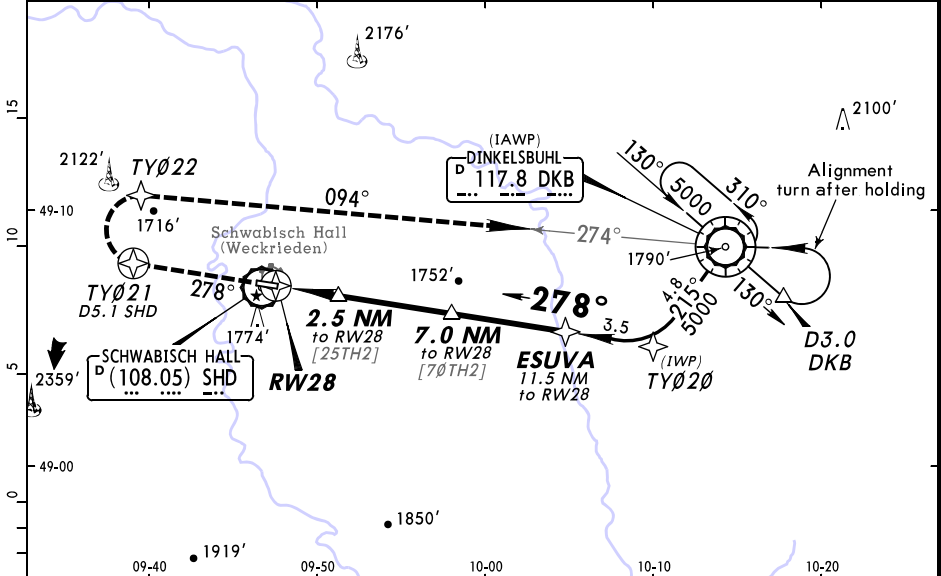


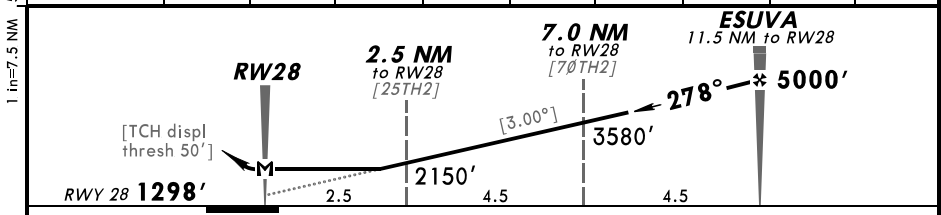
JEPPESSEN SCHWABISCH HALL, GERMANY

EDTY SCHWABISCH HALL 22 OCT 04 Eff 28 Oct 12-2 CAT A & B RNAV (GPS) Rwy 28

LANGEN Radar			*SCHWABISCH HALL Info within 25 NM up to 4000' AGL		
125.05			129.22		
GPS	Final ApcH Crs 278°	Minimum Alt ESUVA 5000' (3702')	MDA(H) 1750' (452')	Apt Elev 1311' RWY 1298'	
MISSED APCH: RNAV: Climb on track 278° to TY021 or 4000', whichever is later, then turn RIGHT via TY022 on track 094° to VOR climbing to 5000'. NON-RNAV: Climb on track 278° to D5.1 SHD or 4000', whichever is later, then turn RIGHT on R-274 to VOR climbing to 5000'.					<div style="border: 1px solid black; border-radius: 50%; width: 100px; height: 100px; margin: 0 auto;"></div> <p style="text-align: center;">3900'</p>
Alt Set: hPa (IN on req) Rwy Elev: 47 hPa Trans level: By ATC Trans alt: 5000' 1. Arrivals leaving controlled airspace when passing 2500 GND. 2. Procedure not to be used during activity of Night Low Flying System (NLFs).					MSA ARP



DIST to DISPL THR	2.0	3.0	4.0	5.0	6.0	8.0	9.0	10.0	11.0
ALTITUDE	1990'	2310'	2630'	2940'	3260'	3900'	4220'	4540'	4860'



Gnd speed-Kts	70	90	100	120	140	160	HIALS PAPI 	Refer to Missed Apch above
Descent angle [3.00°]	372	478	531	637	743	849		
MAP at RW28								

JAR-OPS		STRAIGHT-IN LANDING RWY 28	
		MDA(H) 1750' (452')	
		ALS out	
A	RVR 1400m	RVR 1500m	
B	RVR 1500m		
C	NOT APPLICABLE		
D			