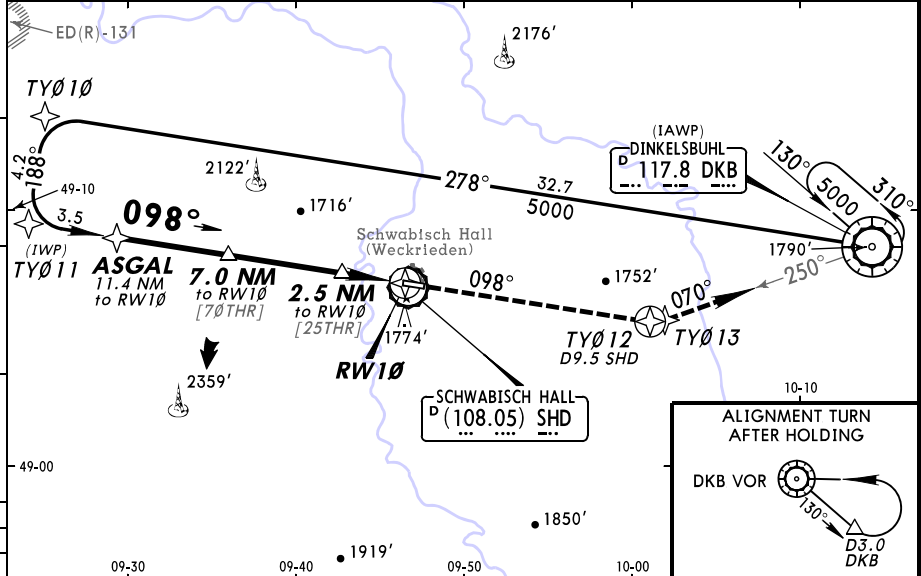


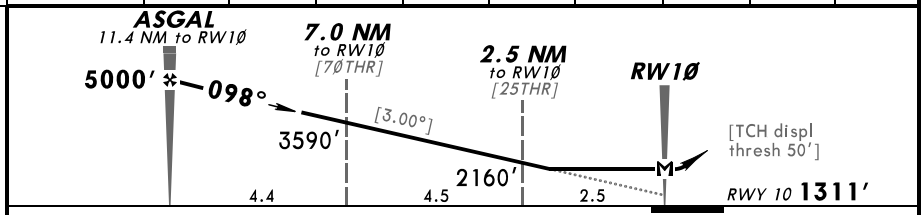
JEPPESSEN SCHWABISCH HALL, GERMANY

EDTY SCHWABISCH HALL 22 OCT 04 Eff 28 Oct (12-1) CAT A & B RNAV (GPS) Rwy 10

LANGEN Radar			*SCHWABISCH HALL Info within 25 NM up to 4000' AGL		
125.05			129.22		
GPS	Final Apch Crs 098°	Minimum Alt ASGAL 5000' (3689')	MDA(H) 1690' (379')	Apt Elev 1311' RWY 1311'	
<p>MISSED APCH: RNAV: Climb on track 098° to TY012 or 4000', whichever is later, then turn LEFT via TY013 on track 070° to VOR climbing to 5000'. NON-RNAV: Climb on track 098° to D9.5 SHD or 4000', whichever is later, then turn LEFT on R-250 to VOR climbing to 5000'.</p> <p>Alt Set: hPa (IN on req) Rwy Elev: 47 hPa Trans level: By ATC Trans alt: 5000'</p> <p>1. Arrivals leaving controlled airspace when passing 2500 GND. 2. Procedure not to be used during activity of Night Low Flying System (NLFS).</p>					



DIST to DISPL THR	11.0	10.0	9.0	8.0	6.0	5.0	4.0	3.0	2.0
ALTITUDE	4870'	4550'	4230'	3910'	3280'	2960'	2640'	2320'	2000'



Gnd speed-Kts	70	90	100	120	140	160	HIALS PAPI 	Refer to Missed Apch above
Descent angle [3.00°]	372	478	531	637	743	849		
MAP at RWY 10								

JAR-OPS		STRAIGHT-IN LANDING RWY 10	
MDA(H) 1690' (379')			
		ALS out	
A	RVR 1200m	RVR 1500m	
B	RVR 1300m		
C	NOT APPLICABLE		
D			