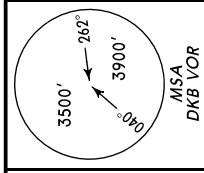


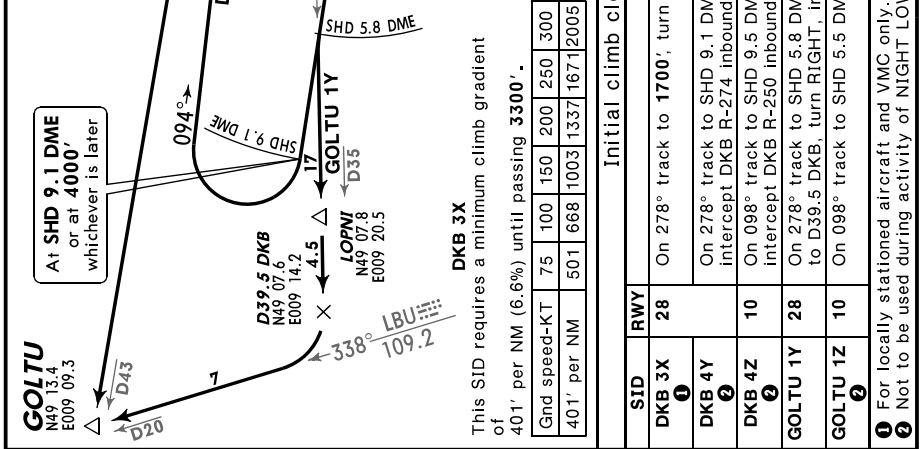
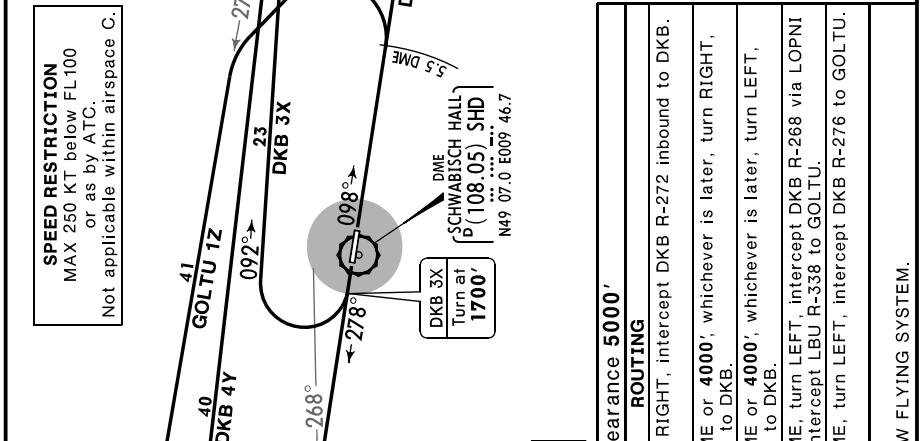
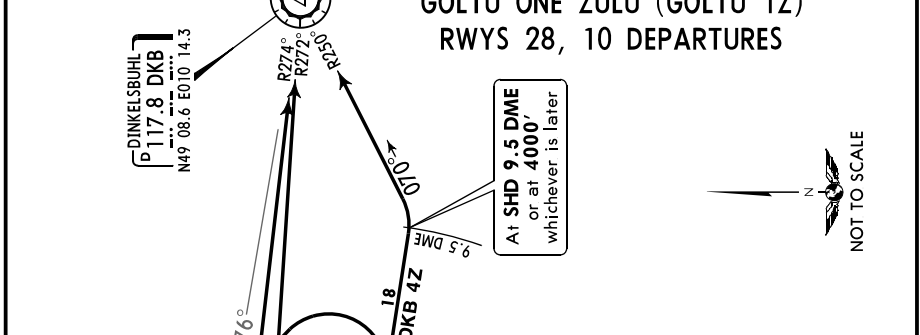
LANGEN Radar 125.05 Apt Elev 1311'

Trans level: By ATC Trans alt: 5000'

1. Contact LANGEN Radar immediately after take-off. 2. EXPECT close-in obstacles. 3. SIDs are also minimum noise routings. Strict adherence within the limits of performance criteria is mandatory. 4. Departures entering controlled airspace when passing 2500' GND.



DINKELSBUHL THREE X-RAY (DKB 3X)  
 DINKELSBUHL FOUR YANKEE (DKB 4Y)  
 DINKELSBUHL FOUR ZULU (DKB 4Z)  
 GOLTU ONE YANKEE (GOLTU 1Y)  
 GOLTU ONE ZULU (GOLTU 1Z)  
 RWYS 28, 10 DEPARTURES



This SID requires a minimum climb gradient of 401' per NM (6.6%) until passing 3300'.

|              |     |     |      |      |      |      |
|--------------|-----|-----|------|------|------|------|
| Gnd speed-KT | 75  | 100 | 150  | 200  | 250  | 300  |
| 401' per NM  | 501 | 668 | 1003 | 1337 | 1671 | 2005 |

| Initial climb clearance 5000' |     | ROUTING  |  |
|-------------------------------|-----|--|--|
| SID                           | RWY |  |  |
| DKB 3X<br>①                   | 28  | On 278° track to 1700'; turn RIGHT, intercept DKB R-272 inbound to DKB.  |  |
| DKB 4Y<br>②                   |     | On 278° track to SHD 9.1 DME or 4000'; whichever is later, turn RIGHT, intercept DKB R-274 inbound to DKB.                     |  |
| DKB 4Z<br>②                   | 10  | On 098° track to SHD 9.5 DME or 4000'; whichever is later, turn LEFT, intercept DKB R-250 inbound to DKB.                      |  |
| GOLTU 1Y<br>②                 | 28  | On 278° track to SHD 5.8 DME, turn LEFT, intercept DKB R-268 via LOPNI to D39.5 DKB, turn RIGHT, intercept LBU R-338 to GOLTU. |  |
| GOLTU 1Z<br>②                 | 10  | On 098° track to SHD 5.5 DME, turn LEFT, intercept DKB R-276 to GOLTU.   |  |

① For locally stationed aircraft and VMC only.  
 ② Not to be used during activity of NIGHT LOW FLYING SYSTEM.

