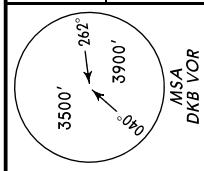


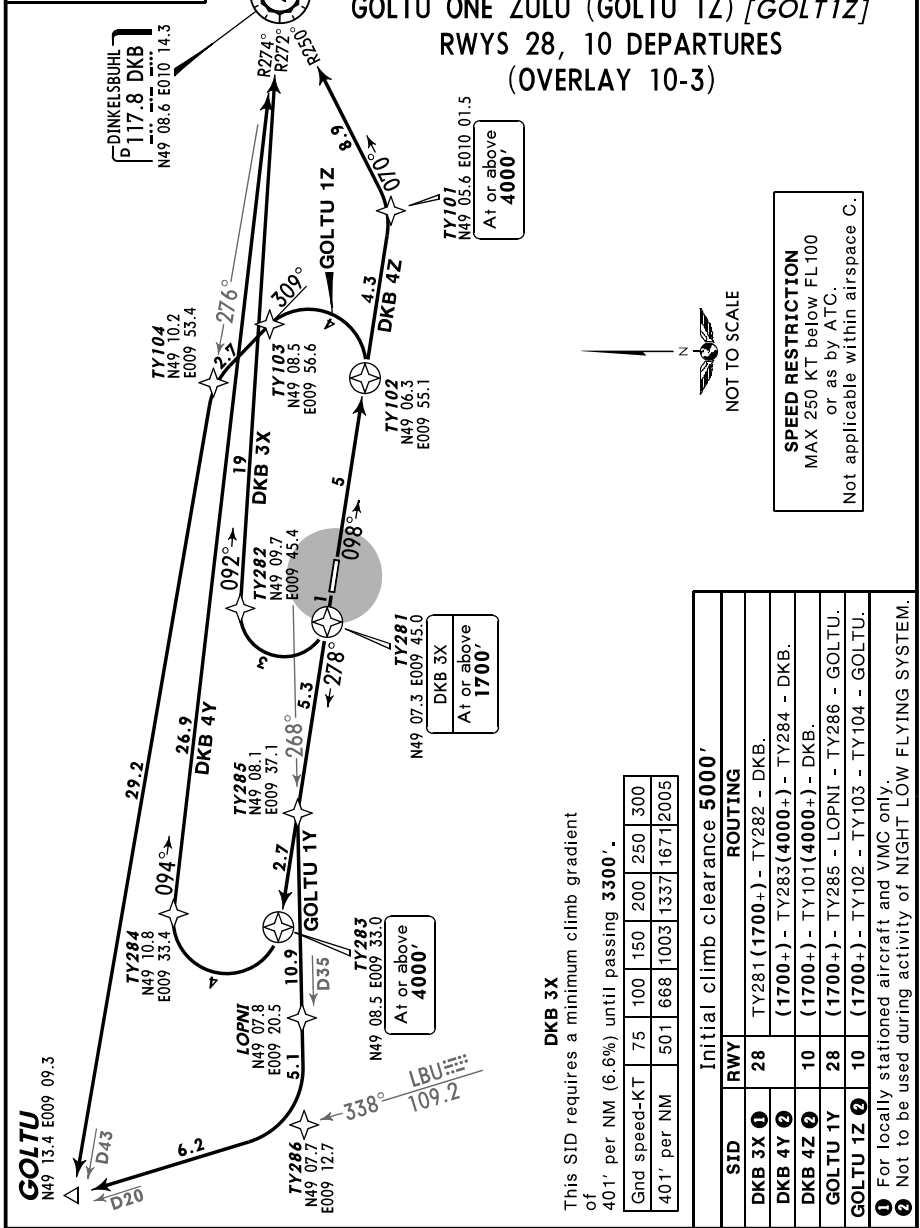
LANGEN Radar 125.05 Apt Elev 1311'

Trans level: BY ATC Trans alt: 5000'

1. Contact LANGEN Radar immediately after take-off. 2. EXPECT close-in obstacles. 3. SIDs are also minimum noise routings. Strict adherence within the limits of performance criteria is mandatory. 4. Departures entering controlled airspace when passing 2500' GND.



DINKELSBUHL THREE X-RAY (DKB 3X)
 DINKELSBUHL FOUR YANKEE (DKB 4Y)
 DINKELSBUHL FOUR ZULU (DKB 4Z)
 GOLTU ONE YANKEE (GOLTU 1Y) [GOLT1Y]
 GOLTU ONE ZULU (GOLTU 1Z) [GOLT1Z]
 RWYS 28, 10 DEPARTURES
 (OVERLAY 10-3)



SPEED RESTRICTION
 MAX 250 KT below FL100
 or as by ATC.
 Not applicable within airspace C.



DKB 3X
 This SID requires a minimum climb gradient of 401' per NM (6.6%) until passing 3300'.

Gnd speed-KT	75	100	150	200	250	300
401' per NM	501	668	1003	1337	1671	2005

Initial climb clearance 5000'	
SID	ROUTING
DKB 3X ①	28 TY281 (1700+) - TY282 - DKB.
DKB 4Y ②	(1700+) - TY283 (4000+) - TY284 - DKB.
DKB 4Z ②	10 (1700+) - TY101 (4000+) - DKB.
GOLTU 1Y	28 (1700+) - TY285 - LOPNI - TY286 - GOLTU.
GOLTU 1Z ②	10 (1700+) - TY102 - TY103 - TY104 - GOLTU.

① For locally stationed aircraft and VMC only.
 ② Not to be used during activity of NIGHT LOW FLYING SYSTEM.